

Hosted Email – Managed by Email Specialists

The Mailtrust Noteworthy® email system is the premium hosted email platform that provides your business with powerful, secure, and reliable email — with absolutely no maintenance on your end.

Along with webmail, mobile email, shared calendaring, and a host of other features, you'll also enjoy premium protection against spam, viruses, and other security threats.

Best of all, Noteworthy email hosting service allows users to access their email from Outlook, BlackBerry, webmail, or any other email client or wireless device.

With Noteworthy hosted email there's...

- **NO MORE** worrying about email going down
- **NO MORE** slow email
- **NO MORE** monitoring alerts
- **NO MORE** patching or updating
- **NO MORE** troubleshooting
- **NO MORE** data backups or restores
- **NO MORE** figuring out wireless access to email

100% Uptime Guarantee

Email is the most important business communication tool, and 123 Marbella and Mailtrust knows that when email is down, business is down.

Our industry-leading 100% uptime guarantee is a reflection of both our understanding of email's central importance to businesses and the high availability email system engineered by our experts.

We tried the more traditional design approach: high-end servers with high-end disk subsystems. The mean time between failure (MTBF) was only somewhat better than commodity hardware, although the high-end server hardware was many times more expensive.

Mailtrust developed a unique system similar to what Google popularized: large numbers of computer servers built on commodity hardware. Server failures are common, so we arrange servers in pairs or clusters then build failure detection into the network or the software.

This built-in redundancy greatly reduces the risk that any service might become unavailable to our customers.

Benefits	Included
100% Uptime Guarantee	✓
Dedicated Transition Team	✓
No Long-Term Contracts	✓
Expert Support - 24x7x365	✓
Triple Redundancy Back-Ups	✓
Features	Included
Easily Integrates w/ Exchange	✓
POP3, IMAP4 & SMTP Access	✓
10 GB Mailboxes / 50 MB Attachments	✓
Premium Spam Filtering	✓
Premium Virus Protection	✓
Mobile Access	✓
Control Panel	✓
Noteworthy Sync	✓
Noteworthy Webmail > Company Directory, Shared Calendaring, and more!	✓
API Interface	✓



Triple Redundancy Backups

Your business data is your business. So to ensure the integrity of your email, we save three copies of your data in three geographically dispersed data centres.

This triple-redundancy system is designed to give you peace of mind that your data will be stored securely.

And if one of your users ever accidentally deletes an email, an entire folder, or even a mailbox, it's easy to restore that data.

The system administrator will just need to log in to the control panel and request a data restoration. Backups are retained for 14 days; so as long as the data was deleted within the past 13 days, a complete restoration can be performed.

Your backup data will be encrypted and safely stored in Amazon.com's S3 storage system, which has a commitment to 100% system availability that matches our own guarantees. The entire triple-redundancy backup system is designed to ensure that your business data will be safe and secure, and there when you need it.



Your data in three places

10 GB Mailboxes and 50 MB Attachments

10 GB Mailboxes

At Mailtrust, our goal is to take storage out of the equation—and that's why we offer users huge, 10 GB mailboxes. No longer will your users have to worry about cleaning out and archiving their mailboxes to prevent running out of storage space.

With 10GB of data storage space, your users can keep all of their emails in their account without deleting them. This helps users to create an effective archive of work activity and provides an excellent way to manage and retrieve information about past projects, decisions, and emailed conversations.

50 MB Attachments

We want to be sure that your users aren't limited by file size limitations when they're sending an attachment. That's why we are one of the leaders in the industry, supporting up to 50 MB attachments per incoming or outgoing email. This helps to ensure that users can send and receive important attachments without concern for file size limitations.

With a 50MB attachment limit, your users could send or receive...
...a 1,000 page Microsoft Word document or 500 JPEG images *

* Illustrative estimate - Actual numbers will depend on the size of a given file(s).



Premium Spam Filtering provided by  **CLOUDMARK®**

It's estimated that approximately 95% of all email sent is spam. Spam is the most complex problem for email hosting systems and leads to millions of dollars in lost productivity and additional infrastructure costs for businesses.

Businesses that try to maintain in-house email servers are fighting a losing battle against spam. Spammers adapt to technology changes and improve their techniques on a daily basis, learning new methods to elude common spam defences and acquiring more sophisticated computer networks to bombard mail systems and penetrate inboxes.

Solving the Spam Problem for You

In order to win the war against spam, we evolve our spam defences faster than spammers evolve their tactics.

If you choose to outsource to Mailtrust™, your business email will run on a state-of-the-art email hosting system with numerous levels of anti-spam protection.

Our spam filtering system, powered by Cloudmark®, features Advanced Message Fingerprinting™ and real-time threat intelligence to rapidly detect spam, phishing, and viruses.

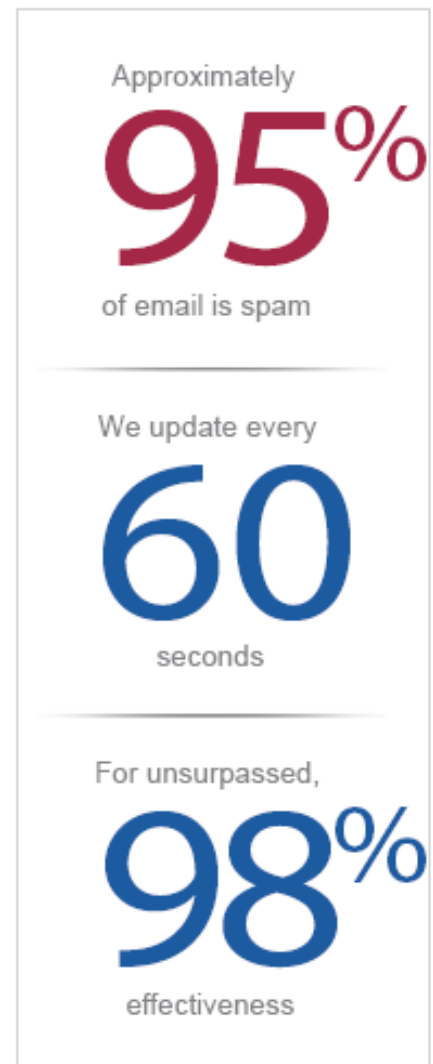
Instead of analyzing message text, Cloudmark generates electronic fingerprints that precisely identify abuse in all languages and formats.

These message fingerprints are stored locally at Mailtrust™ and updated in sub-minute intervals.

This automated approach delivers spam filtering accuracy of 98% or higher together with near zero false positives.

We also empower our customers and end-users with control over their personal safe lists and blacklists to further keep their inboxes clean. Safe lists allow certain senders (email addresses, domains, or mail server IP addresses) to bypass the anti-spam system.

Conversely, blacklists allow customers to block mail from certain senders. Customers can also control what to do with spam once it has been identified.



Virus Protection

Our virus protection scans all inbound and outbound emails using a multi-stage process. The process is broken down into the following four stages:

Stage 1: Restricted Attachments

Here, emails are scanned for dangerous types of file attachments. When an email is sent or received that contains a restricted file attachment, the email is rejected and the sender receives a “bounced” email notification informing them of the restriction.

Stage 2: Normalization

This stage searches for email formatting vulnerabilities that can be used by viruses to hide from virus scanners. If any vulnerability is found, our system corrects the formatting of the message so that it can be thoroughly scanned for viruses.

Stage 3: Decompression

Next, if the email contains any compressed attachments such as zip files, the compressed attachments are temporarily unzipped so that the contents can be scanned for viruses.

Stage 4: Virus Scan

After the above pre-processing is complete, a virus scanner is used to scan the email and all of its uncompressed attachments. Everything is scanned to ensure maximum protection against new virus threats. ClamAV (www.clamav.net) is the current scanner of choice, although our system was designed to be able to plug-in any virus scanner on the market, should the need to do so arise.

Mobile Access

Webmail Mobile

Extend your productivity by accessing your email from your mobile phone with Webmail Mobile.

By pointing your phone’s browser to m.mailtrust.com, you can manage your email, calendar, tasks, and feeds, as well as access your contact list and company directory. There is no additional charge for Webmail Mobile.

Mobile POP/IMAP

Our standards-based email hosting allows wireless devices to pull your email to wherever you find yourself. Just use your mobile phone’s email application to access your email, using a POP or IMAP connection. There is no additional charge for Mobile POP/IMAP.



Please note: Your wireless network provider may charge extra for internet connection services so please contact your service to learn more.

Noteworthy Webmail

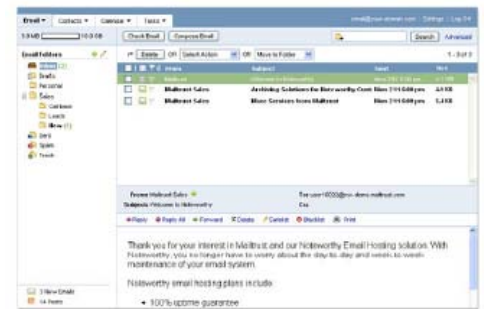
Noteworthy Webmail gives you anytime, anywhere access to your email, calendars, contacts, and task lists in one convenient interface. It's a fully-loaded email/data-management package, designed to be as powerful as a desktop client, but with the benefit of on-the-road access.

All you need is a web browser and an Internet connection.

And thanks to our integrated SSL connection technology, you can be assured that you're the only one viewing your online data. It's safe and secure.

Get the most from your email with Noteworthy's fully featured email manager:

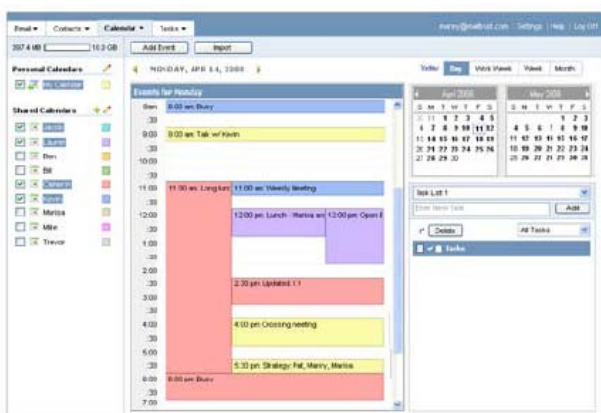
- Integrated preview pane interface gives you a desktop client look, even when you're on the go
- Advanced Ajax and scripting techniques means you get real time actions, just like on a client desktop- no lengthy page refreshes!
- Supports six different languages, including Spanish, French, German, and Greek
- Manage calendars, tasks, and contacts from one interface
- Customize your email delivery with spam filter settings (including Safelists and Blacklists), email filters, auto-response messages, and auto-forwarding to multiple accounts



Noteworthy Webmail gives you access to your email, calendars and more

Webmail Shared Calendaring

Noteworthy Webmail includes a feature-rich web-based calendar with all the functionality you expect from a business-class calendar application - including the ability to share calendars with other users in the email hosting system (even across domains!)



Noteworthy features a robust calendar with sharing capabilities

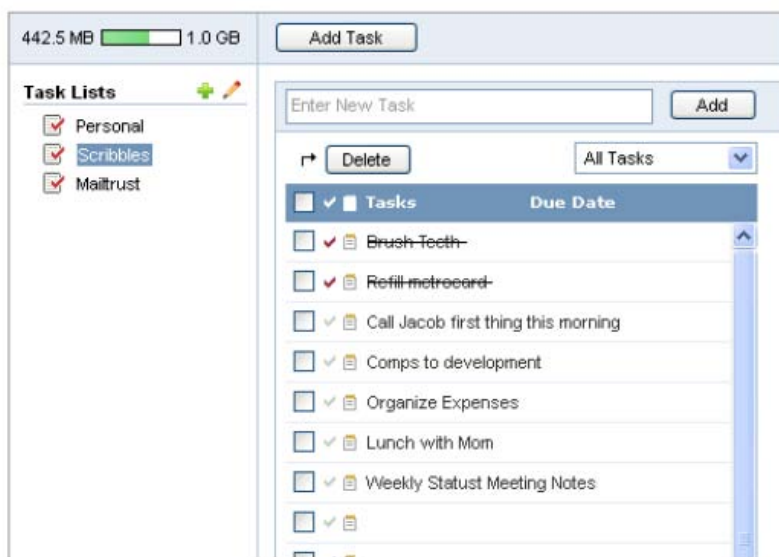
And when you use our Noteworthy Sync service, you can synchronize your personal calendar between Noteworthy Webmail and Outlook, and use Outlook to view others' shared calendars. With shared calendars:

- Administrators can enable and manage calendar sharing from within the administrative control panel
- Users can share their calendar with specified co-workers
- Users can view other people's calendars, if the other person has given permission
- Users can choose to show individual (or all) calendar events as public or private

Webmail Task lists

With Noteworthy Webmail, you get web-based task lists that can go anywhere you go—no more relying on your desktop client to manage your tasks. And with Noteworthy Sync, you can synchronize your Webmail tasks with Outlook and/or Blackberry mobile devices, and/or Windows Mobile devices. You get all the bells and whistles of a powerful task manager:

- Create multiple task lists
- Sort by completed
- Assign due dates
- Enter “note” information for each task

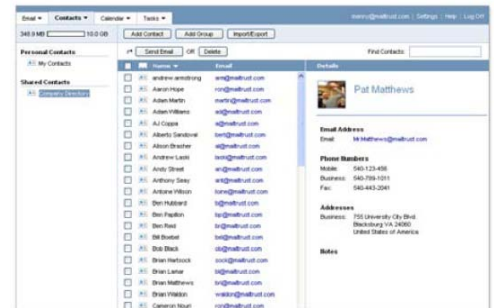


Webmail Contacts, Company Directory and Group Lists

Our contacts and company directory tools are a complete contact management solution for your business. And because they're integrated into Noteworthy Webmail, they're accessible from anywhere—whether you're in the office or on the road.

Though individual users can create their own contact list, they can also have immediate access to up-to-date company contact information through the company directory.

The company directory is available to all (or specific) users in the domain, and is managed by the email administrator. And because individual users can update their own company directory profile, it's easy to keep the company directory up-to-date with the latest phone numbers and other ever-changing contact information.



Users can access the contact list and view the company directory via Noteworthy Webmail. And when you use our Noteworthy Sync service, you can synchronize your data with Outlook or Blackberry mobile devices, and/or Windows Mobile devices, giving you even more flexibility when accessing and managing your contact information.

With the contacts and company directory tools, you can:

- Create and store complete contact information for an unlimited number of contacts
- Create groups from your list of contacts
- View up-to-date contact information for users in your domain or across domains
- Import an address book from any email application (Outlook, Yahoo, Gmail, etc.), and map the original fields to the corresponding fields in the contact list (e.g., mapping "Cellular Phone" to "Mobile Phone")
- Export your contact list for Outlook, Yahoo, Netscape, Gmail, Thunderbird, and Noteworthy Webmail

Additionally, email administrators can create group lists (AKA mailing lists), via the administrative control panel. With group lists, you can:

- Assign an unlimited number of internal (same domain) contacts and up to 50 external (outside the domain) contacts to a single group list
- Automatically add new mailboxes to the list, whenever a new mailbox is added to the domain
- Control who can send email to the group list

Please note- our regular Acceptable Use Policy provides further clarification regarding our sending procedures.

POP, IMAP4 and SMTP

Noteworthy supports all standard email protocols.

This means you get to keep using your favourite

email apps while using our service. POP3, IMAP, & SMTP are the most popular, and they allow users to check and send email via desktop email clients like Outlook and Mozilla Thunderbird, as well as wireless devices like BlackBerry, Treo, and the iPhone.



Outlook



Entourage



BlackBerry



ActiveSync



SSL

POP3

Post Office Protocol (Version 3) is what most users need and use today. POP3 is a client/server protocol in which email is received and held on a mail server. Periodically, you check for mail on that server and then download it to your email client. POP3 is the standard protocol built into practically every email client. This method is well-suited for users that don't want to store email messages online.

IMAP4

Internet Message Access Protocol (Version 4) is another popular way to access email messages. With IMAP, messages and folders are always stored on the mail server. When users access their email, they are working directly with these messages. This means that any updates made to the email, such as moving, flagging, or marking a message as unread, is stored on the server.

IMAP is a convenient option for users who need to access their email online from multiple clients at multiple computers or locations. Our IMAP server supports IMAP IDLE, which provides real-time push support for IMAP applications, alerting you the second you have new mail which makes it very powerful for users on the go.

SMTP

Simple Mail Transfer Protocol is the standard protocol for sending email messages across the Internet. It is also commonly referred to as the outgoing mail server. Our SMTP servers are configured to require SMTP Authentication. The servers themselves perform two important functions. First, they verify that anyone attempting to send outgoing email through the SMTP server has the right to do so. Then secondly, they send the outgoing email. If undeliverable, the mail gets sent message back to the sender.

SSL and TLS Encryption

We provide SSL and TLS encryption for POP3, IMAP, SMTP, and the Noteworthy webmail client. Basically, this encrypts your data so that others cannot view it. Our servers also support opportunistic TLS, which allows your incoming and outgoing email data to be encrypted as it travels through the internet. This is very important for passwords and confidential emails.

Supported RFCs

RFCs are standards for email communication between servers and email clients. These standards are approved by the Internet Engineering Task Force (IETF) and are known as RFCs. These standards cover SMTP, POP, and IMAP, among other Internet technologies.

Noteworthy Sync for Outlook, Blackberry & Windows Mobile

Today's on-the-go email user demands synchronization of their data, regardless of device or location. Mailtrust has recognized this growing need and is proud to introduce Noteworthy Sync.



Outlook

With Noteworthy Sync, users of our Noteworthy product can now keep their calendar, contacts, and tasks synchronized across Microsoft Outlook, BlackBerry mobile devices, Windows Mobile devices, and Noteworthy Webmail.



BlackBerry

Sync is designed as a plug-in, using the open standard SyncML, and can be installed directly on a user's computer or mobile device.

Users can customize the synchronization settings and also set up automatic synchronization.



Windows
Mobile

Windows Mobile

Sync lowers frustration while increasing productivity by eliminating the need to enter the same data into several locations.

With Noteworthy Sync, you can:

- Synchronize calendars, contacts, and tasks between Outlook, BlackBerry mobile devices, Windows Mobile devices, and Noteworthy Webmail
- View shared calendars in both Microsoft Outlook and Noteworthy Webmail
- Schedule automatic synchronizations
- Manage and update data from any computer BlackBerry mobile device, and/or Windows Mobile device
- Increase productivity by giving others visibility to calendars online and offline
- Easily set up sync capability between multiple computers